



# MULTISCAN

## AI-POWERED DIGITAL AUTOMATED MICROSCOPY AND SCANNER

For streamlined laboratory workflows and routine analyses



# QUICK START GUIDE

## How to start a measurement with the Multiscan

### 1. Software overview



**Dashboard:** Use this button to log in with user account (admin/admin)

**Sample Scan:** Start measurements and adjust scanning settings

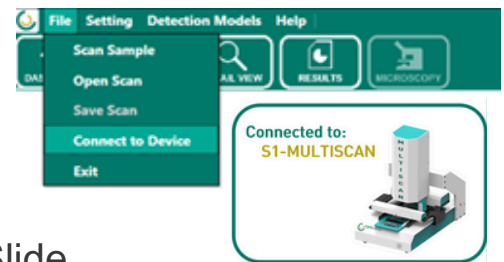
**Detail View:** View measurements and results in detail

**Results:** Documented list from all scans and results of egg counts

**Microscopy:** Live microscope

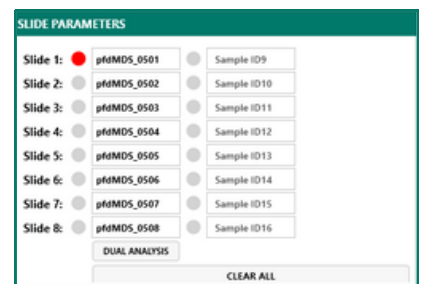
### 2. Start a scan

- Confirm Multiscan is connected (symbol)
- Click SAMPLE SCAN
- Select the appropriate slide format: Slide, McMaster, or mini-FLOTAC



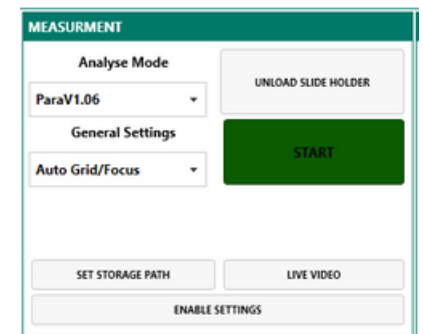
### 3. Set scan parameters

- Enter a Slide ID in SLIDE PARAMETERS
  - Only slides with an ID will be scanned
- Under MEASUREMENTS, set the storage path (local folder)
- Select the desired AI model



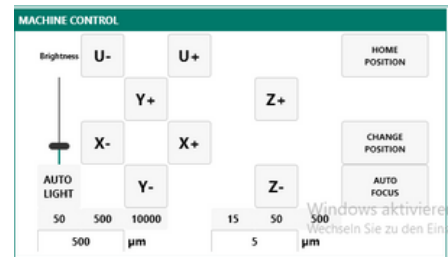
### 4. Load the samples

- Place the slides on the sample tray
- Make sure the screw is correctly positioned
- Click LOAD HOLDER
- Press LIVE VIDEO to open the live camera
- Confirm that the sample is in focus or adjust



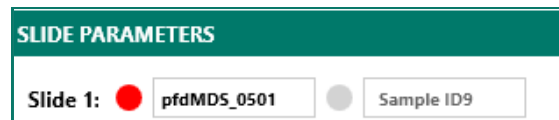
## 5. Adjust the starting point (if needed)

- Use the X+, X–, Y+, Y–, Z+, Z– buttons to move the microscope



## 6. Save the starting position (if needed)

- Double-right-click on the red circle next to the sample ID in SLIDE PARAMETERS to save the position
- A message will confirm: “New coordinates for slide X are stored.”
- A single click on the circle moves the scanner back to the saved position



## 7. Special settings McMaster chambers

- Preferably select “Auto Grid/Focus.”
- Use “Fixed” if there are focusing issues
- Under ENABLE SETTINGS (MEASUREMENTS) select the McMaster type used (blue grid, FiBL, or Marienfeld)

- Using Standard McMaster (Blue Grid)
- Using FiBL McMaster (Black Grid)
- Using Marienfeld McMaster (Black Grid)

## 8. Start measurement

- Press START and let the system run until scans are completed



## 9. After the measurement

- Click UNLOAD HOLDER and remove the scanned slides
- Place the next batch of slides and repeat the procedure

# AI ANALYSIS REVIEW

## How to review and validate AI-powered results

### 1. Open analysis results

- Click on  in the top left menu

### 2. Select measurements

- Click on “Folder” to open results. A list of samples will appear
- For slides with multiple scanned areas, individual scans can be accessed by selecting the corresponding entry

### 3. Click “Details” to load information

### 4. Open scans under Detail View:



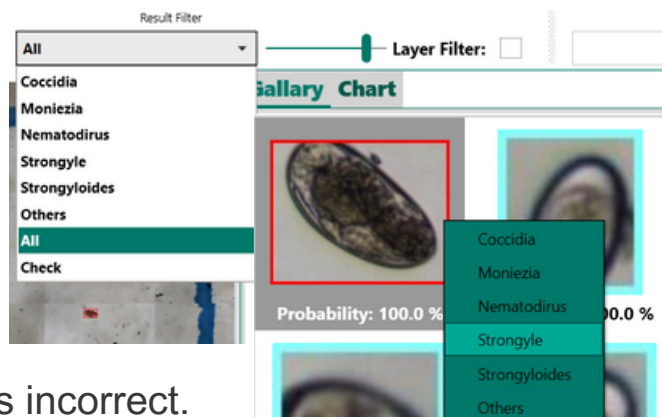
NO.	SLIDE-ID	DATE	EMPLOYEE	ANALYSED	PROGRESS
1	1480	3/30/2025 5:36:08 PM	Admin	ParaV1.06	Reviewed
1	1480-S1	3/30/2025 5:36:08 PM	Admin	ParaV1.04	
2	1480-S2	3/30/2025 5:36:09 PM	Admin	ParaV1.06	
2	17C	3/30/2025 5:36:07 PM	Admin	ParaV1.06	Reviewed
3	18C_V2	3/30/2025 5:36:08 PM	Admin	ParaV1.06	Reviewed
4	30035	3/30/2025 5:36:09 PM	Admin	ParaV1.04	AI-Analyse
5	30178_3	3/30/2025 5:36:13 PM	Admin	ParaV1.06	Reviewed

### 5. Results view

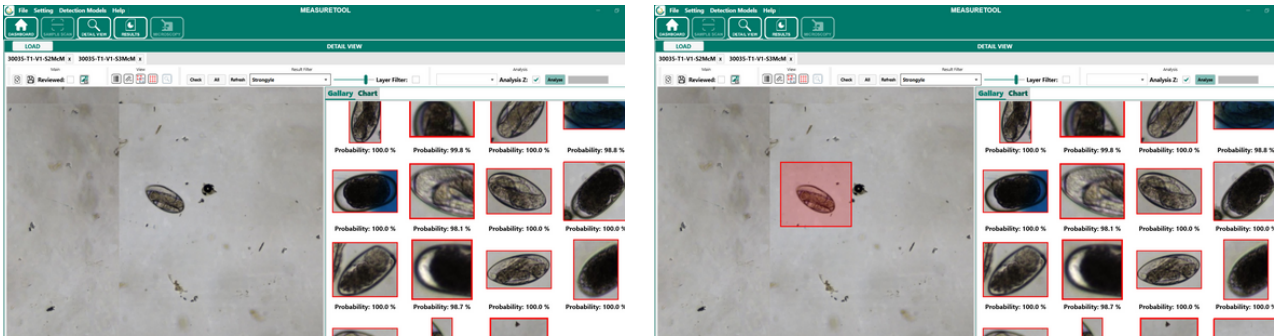
- The left side shows the full sample overview with AI-identified particles. Use the mouse wheel to zoom in and out
- The right side lists all detected particles. Double-clicking a particle shows its position in the overview and opens detailed information

### 6. Evaluate results

- Review detected particles in the right panel by scrolling through the list:
  - Delete a particle if it was wrongly detected
  - Right-click to assign a different class if the label is incorrect.

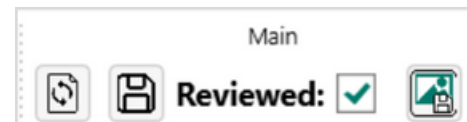


- If an egg was missed by the AI, select the correct class in “Result Filter”, then draw a box over the particle using the left mouse button



## 7. Finalize reviewed results

- After completing your review, check the “Reviewed” box on the top-left Menu and click “Save”
- Reload the analysis to display the reviewed version



## 8. Switch to the “Results” tab

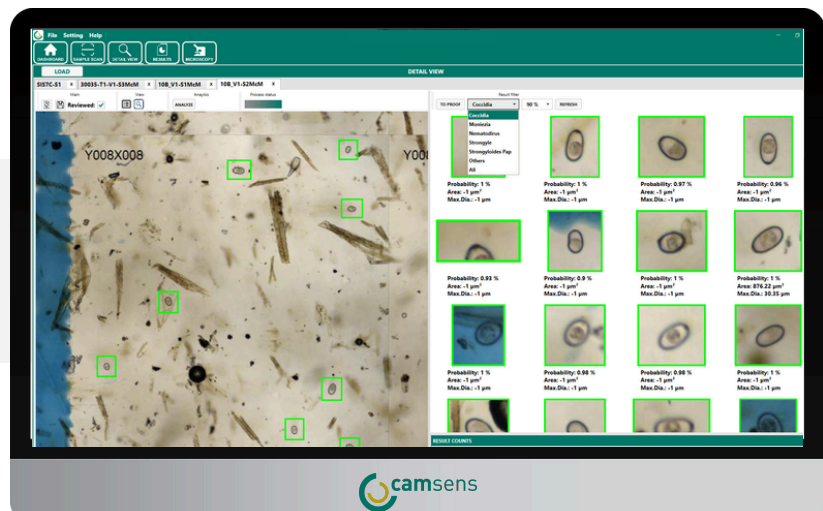
- The status bar shows if results are marked as reviewed
- Click “Save” to export results as an Excel file



NO.	SLIDE-ID	DATE	EMPLOYEE	ANALYSED	PROGRESS
1	1480	3/30/2025 5:36:08 PM	Admin	ParaV1.06	Reviewed
2	17C	3/30/2025 5:36:07 PM	Admin	ParaV1.06	Reviewed

## Links for additional resources:

- [User manual](#)
- [Demo video \(2024\)](#)





# GET IN TOUCH



+49 36841 290068



info@camsens.de



www.camsens.de



Fahrenheitstr. 1, 28359 Bremen, Germany

